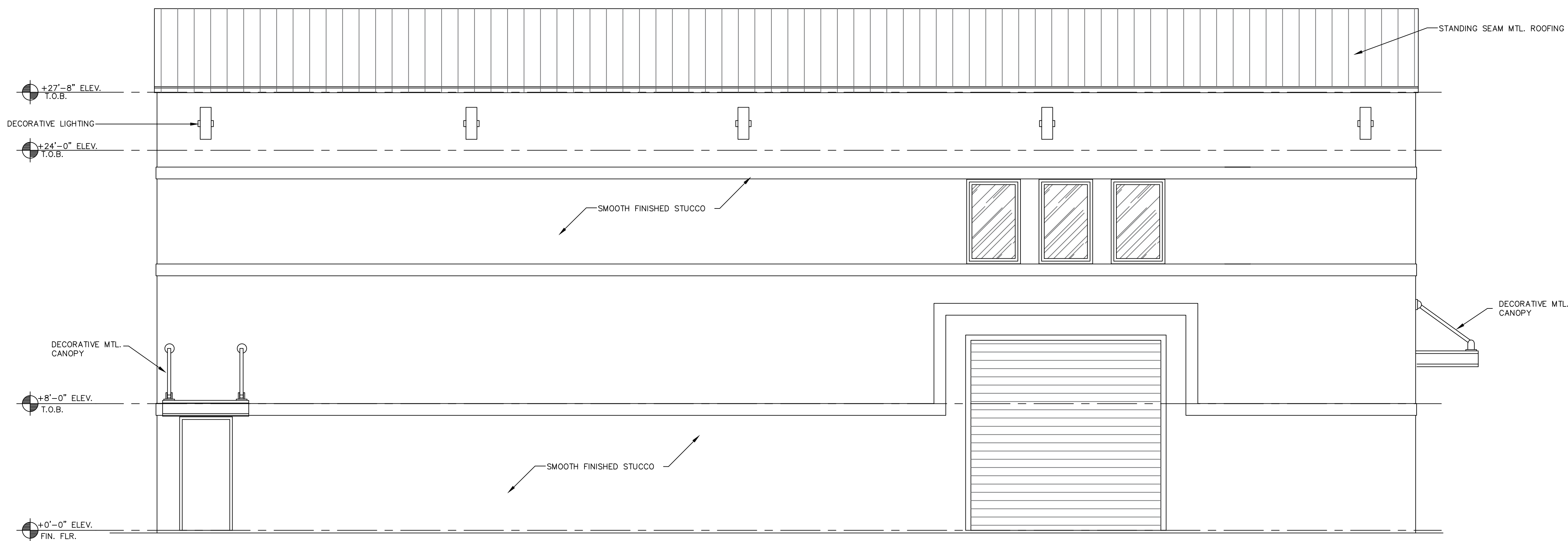


NORTH ELEVATION

SCALE: 1/4" = 1'-0"



SOUTH ELEVATION

SCALE: 1/4" = 1'-0"

NOTE: TO THE BEST OF THE ARCHITECT'S KNOWLEDGE, THE PLANS AND SPECIFICATIONS COMPLY WITH THE APPLICABLE MINIMUM BUILDING CODES AND APPLICABLE FIRE-SAFETY STANDARDS AS DETERMINED BY THE LOCAL AUTHORITY, IN ACCORDANCE WITH FBC BCA 110.8.5.4 AND CHAPTER 633, FLORIDA STATUTES.

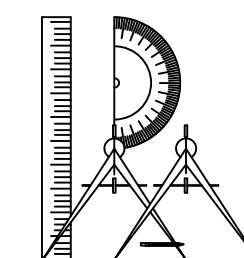
RAM DESIGN, INC. HEREBY RESERVES ITS COMMON LAW COPYRIGHT AND OTHER PROPERTY RIGHTS IN THESE PLANS, SPECIFICATIONS, AND ANY INFORMATION CONTAINED HEREIN. NO PART OF THIS DOCUMENT IS TO BE REPRODUCED OR COPIED IN ANY FORM OR BY ANY MEANS, WITHOUT THE WRITTEN PERMISSION OF RAM DESIGN, INC. TO ANY THIRD PARTY, WITHOUT FIRST OBTAINING THE WRITTEN PERMISSION OF RAM DESIGN, INC. EXPRESS WRITTEN PERMISSION FROM RAM DESIGN, INC. IS REQUIRED FOR ANY REPRODUCTION OR COPIING OF THIS DOCUMENT. ANY REPRODUCTION OR COPIING OF THIS DOCUMENT WITHOUT THE WRITTEN PERMISSION OF RAM DESIGN, INC. SHALL BE CONSIDERED A VIOLATION OF THE COPYRIGHT AND OTHER PROPERTY RIGHTS OF RAM DESIGN, INC. AND SHALL BE SUBJECT TO LEGAL ACTION.

FLORIDA DEPT. OF PROFESSIONAL REGULATION
BOARD OF ARCHITECTURE LICENSE #0009409

AUTOMOTIVE CUSTOMIZERS WAREHOUSE
1359 N.W. 17th PLACE , POMPANO BEACH , FLORIDA

REVISIONS

12-6-24-DRC

DRAWN BY:
R.A.M.

12-5-23

#23106

A-3

RAM DESIGN, INC. - 10001 N.W. 50TH ST., SUITE 203G, SUNRISE, FLORIDA 33351 (954) 748-5661 FAX: 747-08